

Alaska Department of Fish and Game

Habitat Section
Southeast Region



112-50-10250-2011 Tributary 1

ADDITION

Water body name:

Survey date: 8/29/2022

Quad: Sitka D-4

Species & Lifestage:

Upper Reach Latitude: 57.885876 **Longitude:** -135.168265

Survey crew: FC, RR

Lower Reach Latitude: 57.887332 **Longitude:** -135.163851

Findings: We surveyed this uncataloged stream using baited minnow traps and GPS. We captured juvenile coho salmon and Dolly Varden. The tributary stream emerges from one 24 inch wide culvert with a 1 ft perch and flows through a roadside ditch, passing through another 24 inch wide culvert crossing the road downstream (Table 1; Figures 1, 2).

Recommendations: Add this uncataloged stream to the anadromous waters catalog for rearing coho salmon (Figure 3).

Nomination: Pending

Table 1.—112-50-10250-2011 tributary 1 survey data.

Waypoint	Latitude	Longitude	Notes	Stream Width ft	Stream Substrate	Habitat Features	Gradient %	Sample Effort	Sample Results
1620	57.885886	-135.168244	Minnow trap set in stream paralleling road in ditch, unsure where road crossing occurs.	2-4	Small Gravel Fine Organic		2-4	MT	2 CO
1621	57.885139	-135.167644	Minnow trap set downstream of 24" CMP with 1' perch.					MT	No Fish
1622	57.884946	-135.167467	Minnow trap set upstream of culvert. Stream is paralleling road in ditch.					MT	1 DV
1653	57.886274	-135.168218	Use for route of upstream waypoint with CO capture. 24" CMP, partially crushed on side at outlet. Buried inlet across road where two streams paralleling each road at fork converge.						



Figure 1.—Juvenile coho salmon captured at waypoint 1620.



Figure 2.—Partially crushed culvert outlet at waypoint 1653.

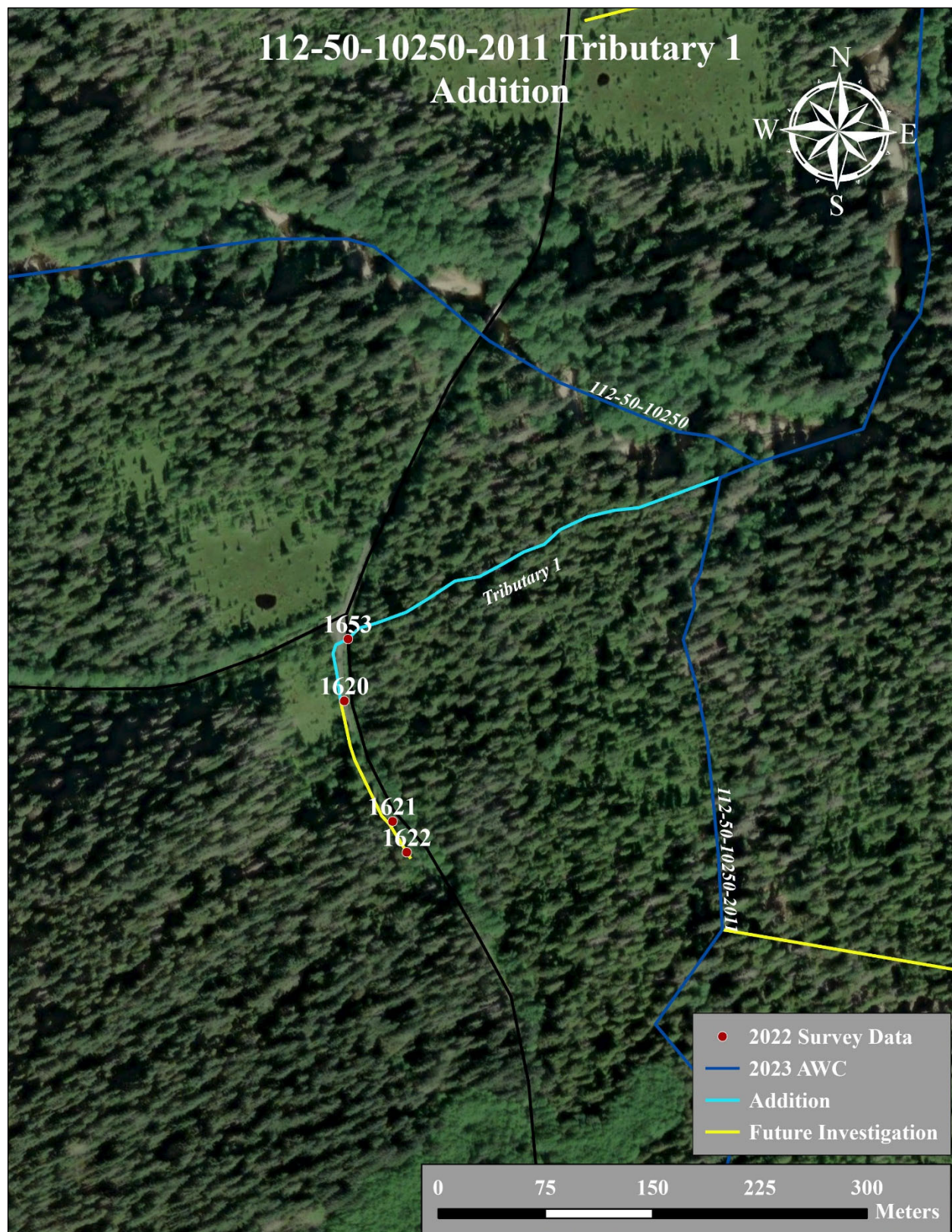


Figure 3.—112-50-10250-2011 tributary 1 addition map.